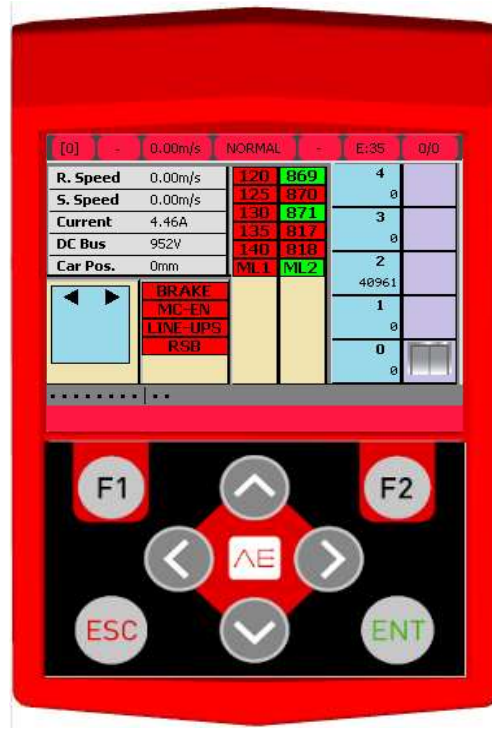


AE-MAESTRO HAND TERMINAL



USER MANUAL



Document Name : AE-MAESTRO Hand Terminal User Manual

Document Code : AEMTFT-UMEN

Document Version : 1.0

Software Version :



AE-MAESTRO is rather easy to operate with 320 x 240 TFT display which is located over. Owing to using the control screen, all operations such as changing system parameters, back-up, software update, elevator status and change control are performed. Also the current settings can be viewed via the TFT display.

There are four directional buttons existed on the TFT hand terminal which are **Up**, **Down**, **Left**, **Right** also **ESC**, **ENT**, **F1**, **F2** buttons. The direction buttons have different functions depending to the menu these are used. **ESC** and **ENT** buttons usually function as fixed. Pressing the **ESC** button allows you to exit the current menu and application. **ENT** button usually provide you to confirm the request of ratification or choose the row, icon or indicator.

The main screen shows information such as lift movement, door, inputs, speed, voltage, current, location. If the specified inputs are active then color is green but if the inputs are passive is indicated red color. At the bottom of the main screen the current error information is continuously transmitted to the user.

Functions of Buttons on the Main Screen



To give record of up floor press to the **Up** direction button, to give record of down floor press to the **Down** direction button, in order to give record of cabin, press to right direction button and for go to menu screen press to **ENT** key. Please press **ESC** key to exit these pop-up screens.

When the direction buttons on the home/menu screen are pressed, the option is as shown below for to enter record from cabin or floor.(Figure-1)

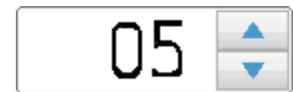
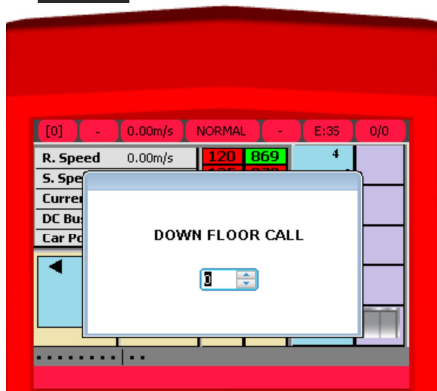
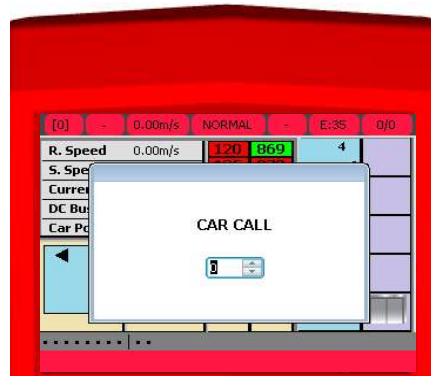
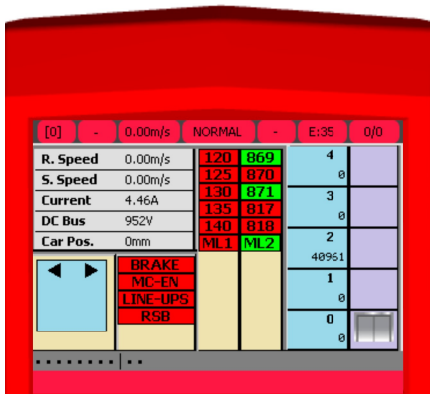


Figure 1



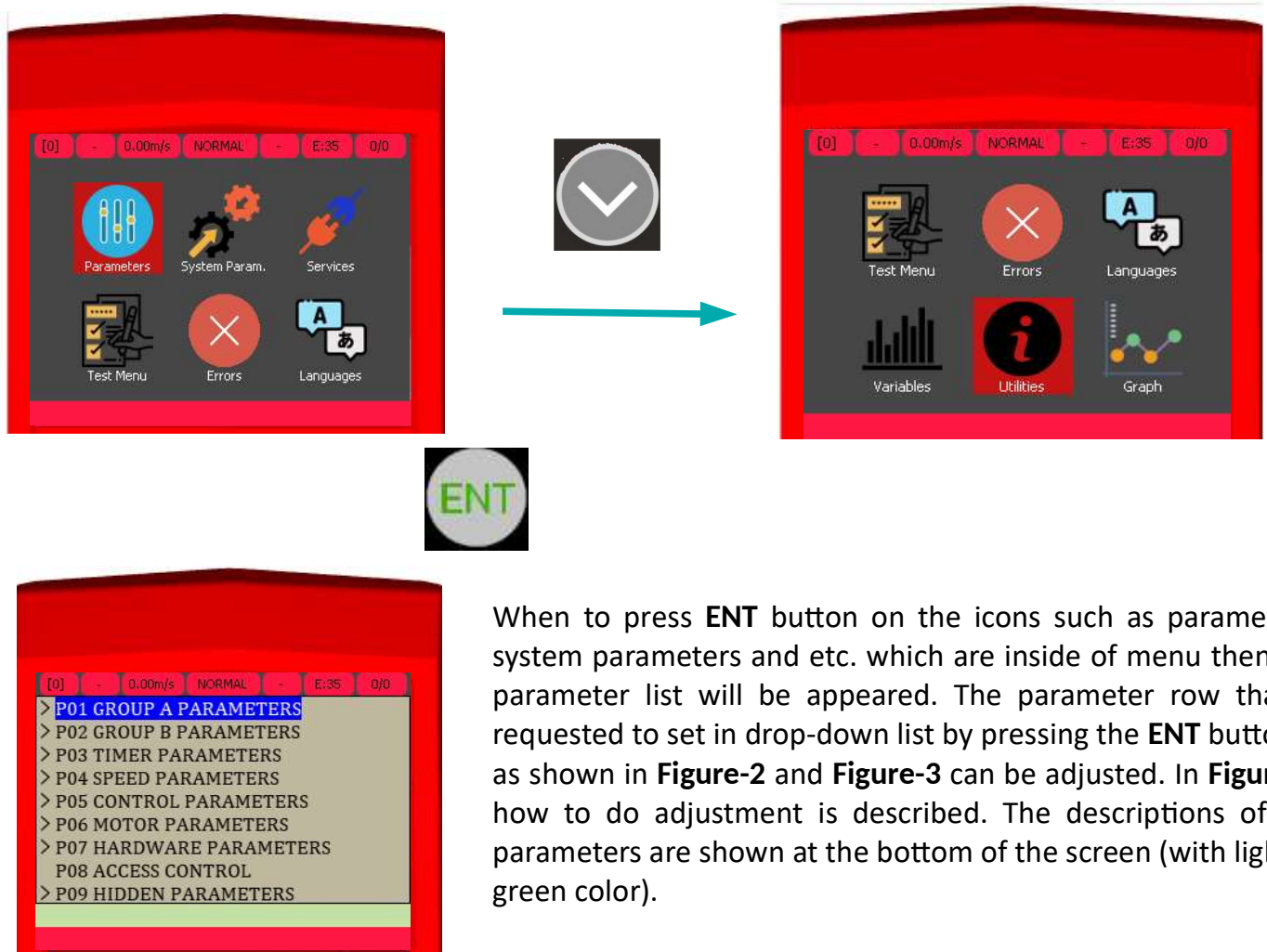
The number can be increased or decreased with **UP** or **DOWN** buttons on the display. If the number of stops are double digits, the alteration between the digits of the number can be made with **RIGHT** and **LEFT** buttons. Record of floor and cabin can be given via pressing **ENT** button after setting the required number. After registration entry with ENT, the registration screen will be carried out automatically. **ESC** button must be pressed on login screen in order to exit without recording.

Press ENT Button on the Main Screen

The menu will be activated when press **ENT** button. You can navigate in the menu via using **Down, Up, Right, Left** buttons and make selection through use **ENT** button. The menu screen includes options which are **Parameters, System Parameters, Services, Test Menu, Errors, Languages, Variables, Features and Graphics**. Press the ESC button to return to the main screen.

MENU SCREEN

Parameters



When to press **ENT** button on the icons such as parameters, system parameters and etc. which are inside of menu then the parameter list will be appeared. The parameter row that is requested to set in drop-down list by pressing the **ENT** button as shown in **Figure-2** and **Figure-3** can be adjusted. In **Figure-1**, how to do adjustment is described. The descriptions of the parameters are shown at the bottom of the screen (with light green color).

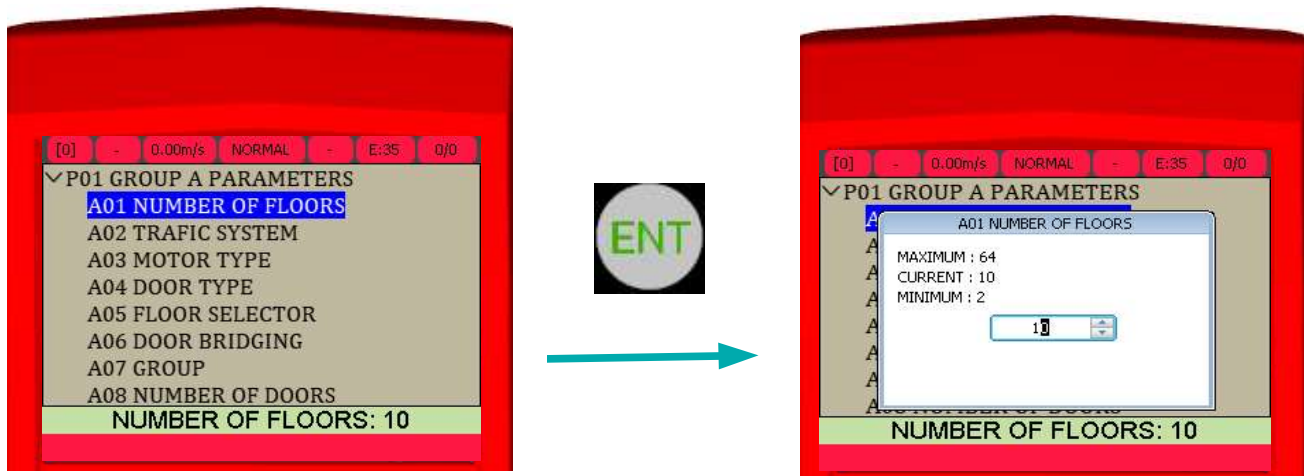


Figure 2

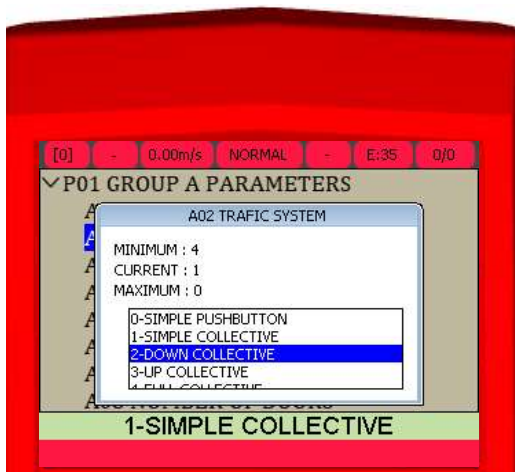
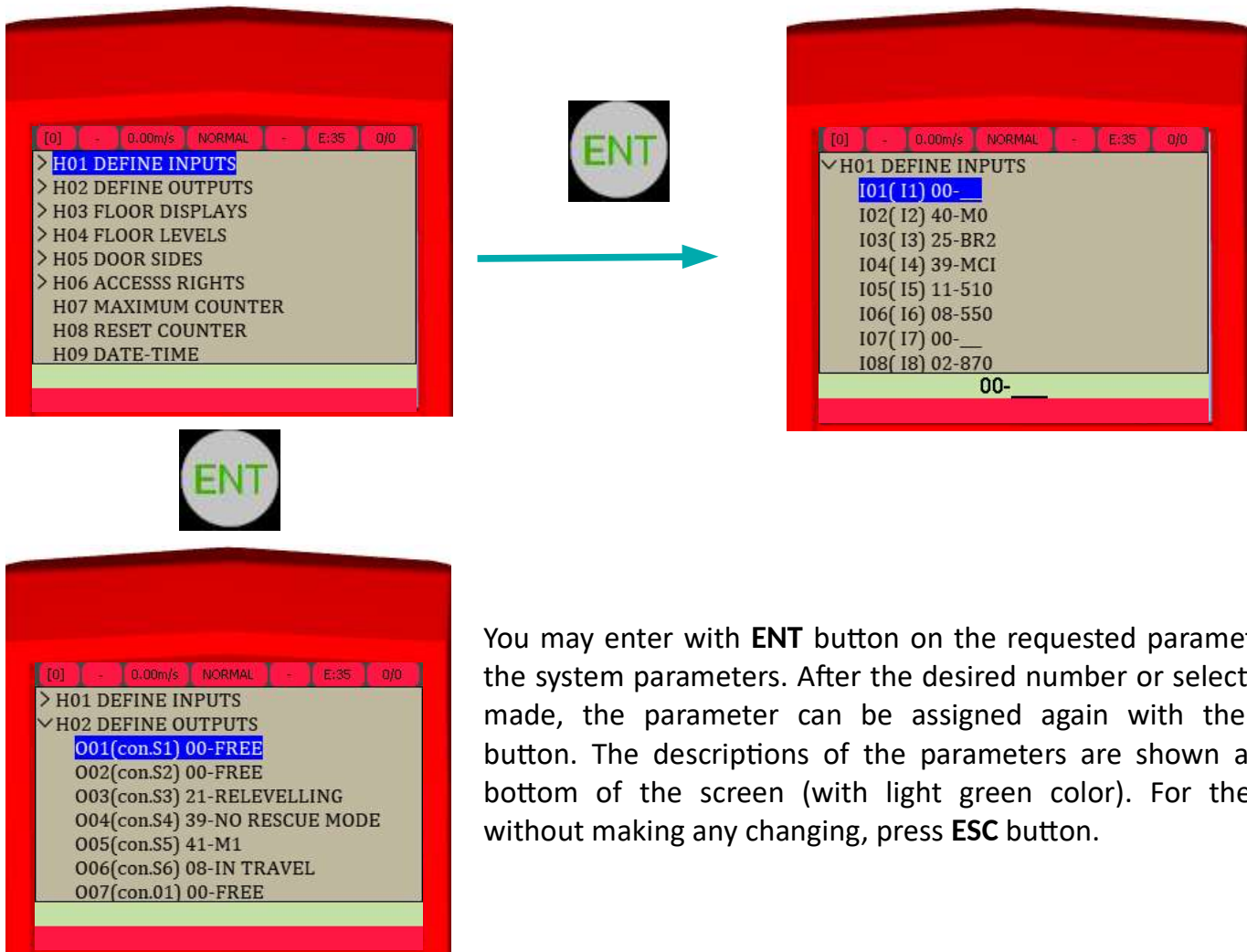


Figure 3

When assigning a number as in **Figure-2** in some parameters however, the number can be selected from available options on the screen in some other parameters. This situation is shown as in **Figure-3**. Desired assignment may be done with **ENT** button after requested options and number selections can be made with **Up** and **Down** arrow buttons. After the assignment or selection, press **ENT** button to save. For the exit without making any assignment, press **ESC** button.

System Parameters



You may enter with **ENT** button on the requested parameter in the system parameters. After the desired number or selection is made, the parameter can be assigned again with the **ENT** button. The descriptions of the parameters are shown at the bottom of the screen (with light green color). For the exit without making any changing, press **ESC** button.

Services

With the ENT button within the menu screen, UCM error deletion, shaft learning, floor pulse adjustment, tuning, UCM test, limit stop test, operations, factory settings, remove errors, remove encoder data, pulse recording, display adjustment, brake test, password service etc. will be appeared. With the ENT button, one of these options can be adjusted. It is available in the actions required for each option.

Test Menü

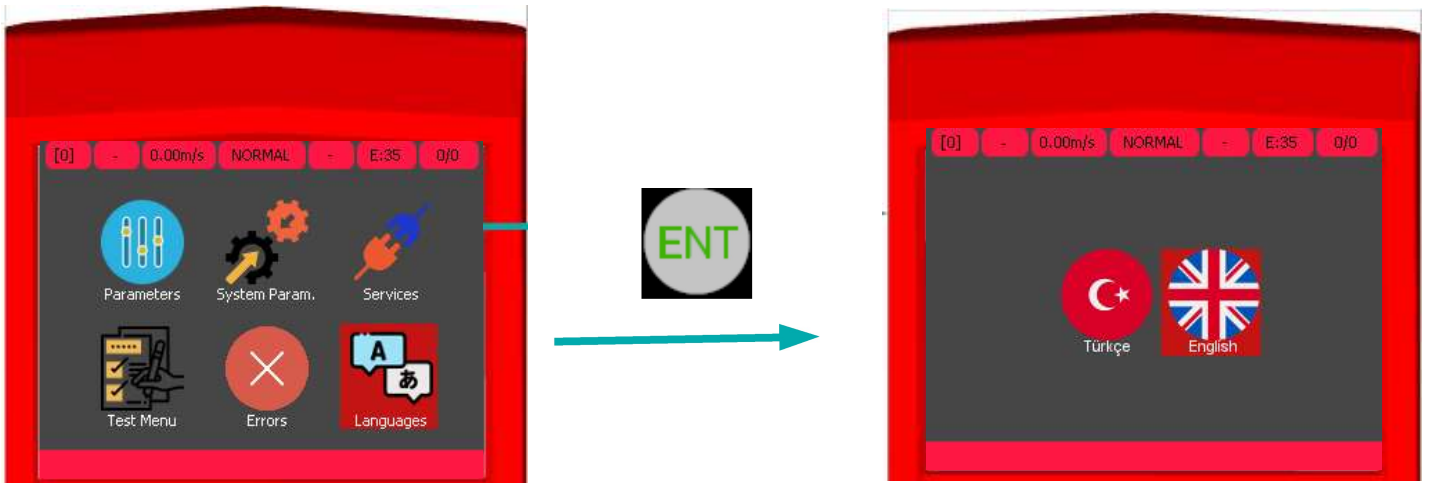
AE-MAESTRO has a special function to test the lift during normal use. The system automatically allows up to 600 calls and resumes the normal operation. Floor calls and doors can be deactivated if requested.

In the menu screen, press the **ENT** button to access the Test Menu. After accessing the menu in the option, the operations are available. After you have accessed the menu, press **UP** button to continue. After the status of calls and doors are determined with **Right** or **Left** buttons, the operation is started with **ENT** button. Press **ESC** to return to the previous menu.

Errors

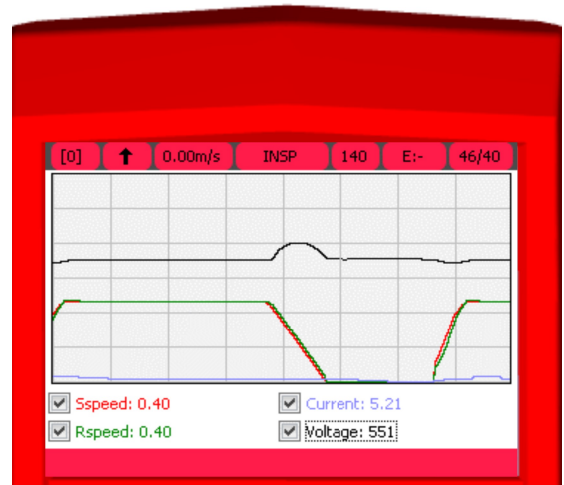
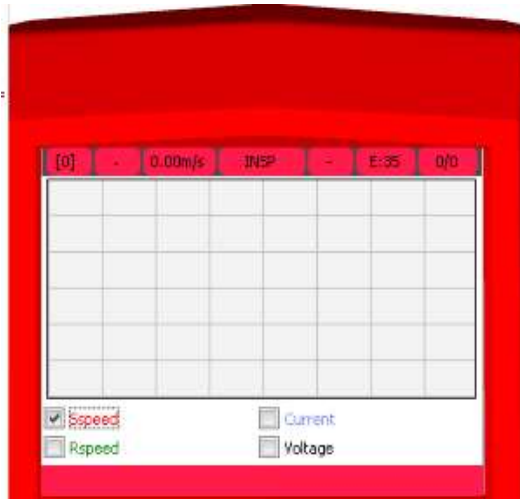
The system errors are read automatically after you enter the errors section with the **ENT** button in the menu screen. After the reading process is completed, the current errors or errors will be displayed on the screen.

Language Options



Language can be selected in the desired language by pressing **ENT** on the menu screen. All text on the screen will be translated according to the selected language option. **The SD card should not be removed because the existing texts and translations are read from the SD card.**

Graphic Options



Graphic screen and its options will appear when the **ENT** button is pressed which is located in graphic icon in menu screen. There can be scrolled with **UP** and **DOWN** buttons in between options of Speed, Current, Voltage. The box that is located beside option will be marked when **ENT** button is pressed (**Figure-4**). When the **ENT** button is pressed again, the mark can be removed. The graphic to be displayed must be marked by the user. Then, with the movement of the lift, the graphics in the desired options are displayed in real time on this screen. Press the **Right** button to keep the graph on the screen. When press **Right** button again, the graph continues. Press **ESC** button to return to the menu screen.

Specifications Option

AE-MAESTRO software can be updated with the specifications option. **ICM** or **ICS** software can be shared through software document in SD card. After entered to specifications menu that the icon may be chosen which is to realize with **ENT** button.

Factory Reset:

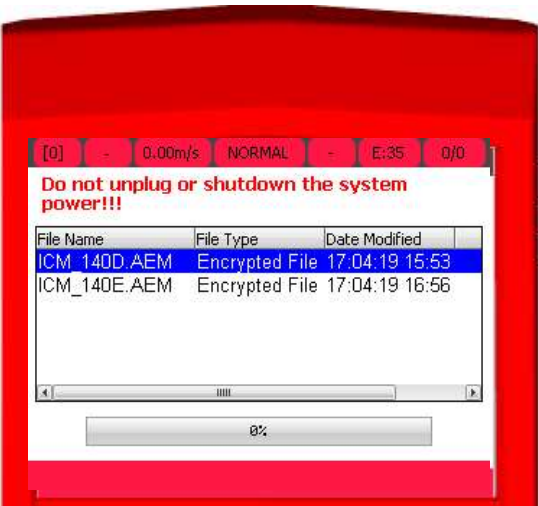
If you are just starting to use the control board or you want to delete all existing parameters to rearrange the parameters, you can return to the factory settings. In this process, all parameters are deleted first and then adjusted according to the type of elevator you set.



Figure 5



ICM Upload:



The software update process is carried out via SD card. Therefore, do not remove the SD card in any way. After entering to the **ICM Upload** Icon with **ENT** button, software that is desired to update can be chosen with **UP**, **DOWN** buttons and may be started with **ENT** button. Same operations are valid for **ICS Upload** Icon.



ICS Upload:

After the software updating process has started, the occupancy rate indicates the software download rate. No action should be taken until 100%.



Warning: Do not disconnect the energy and connection during the software updating. Otherwise, the software installation will fail and the software will not be installed again.